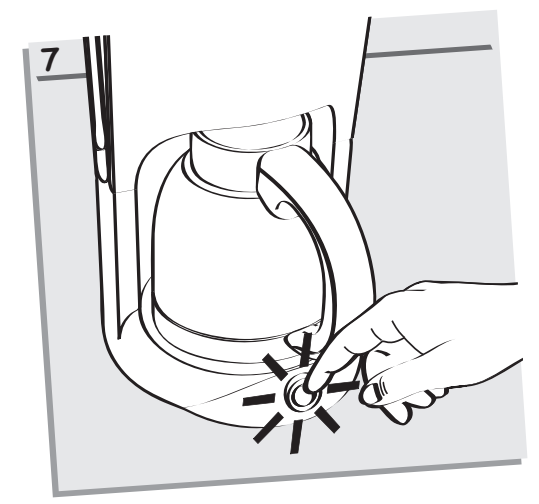
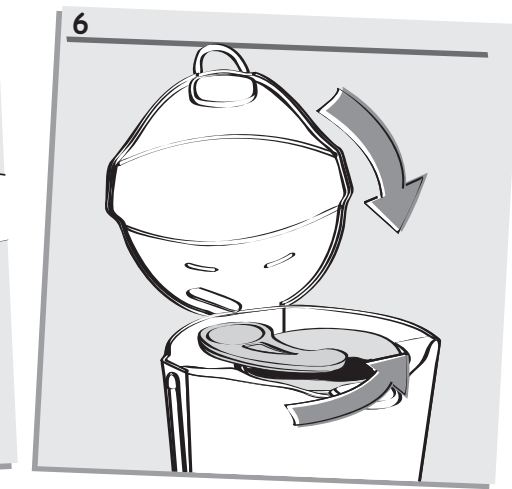
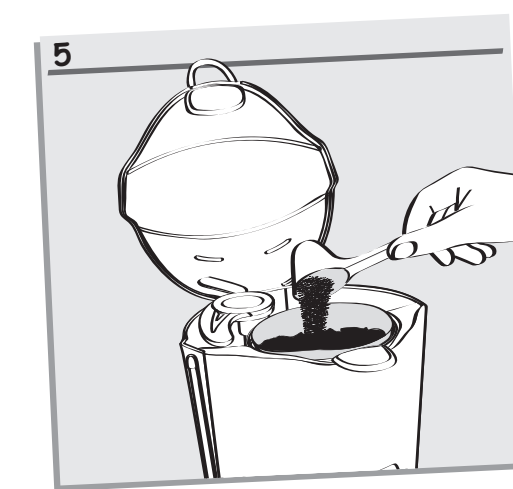
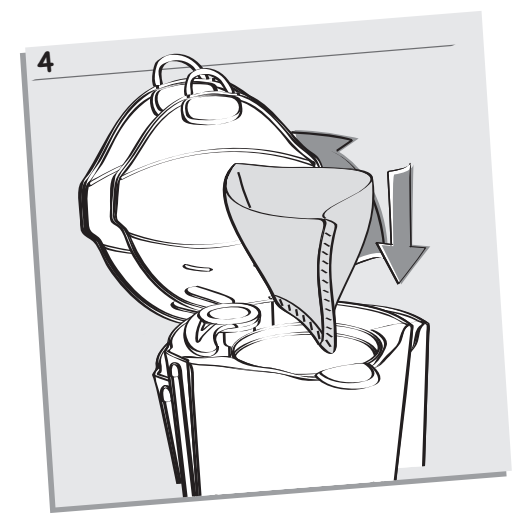
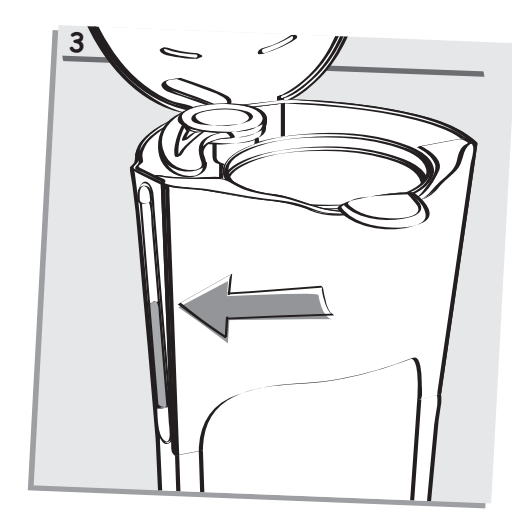
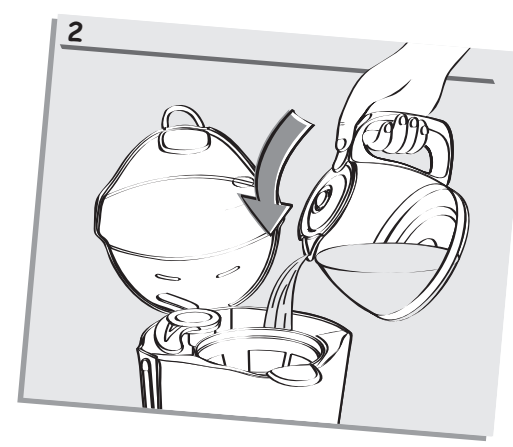
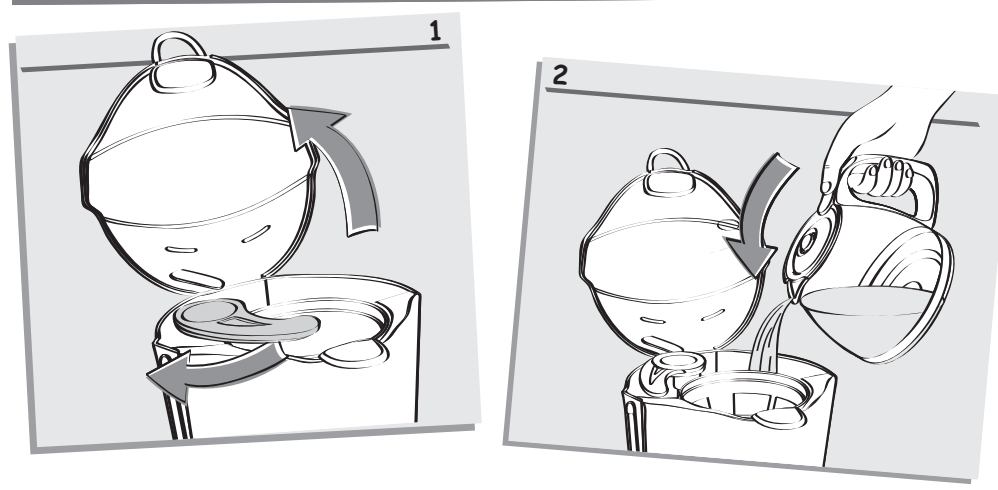
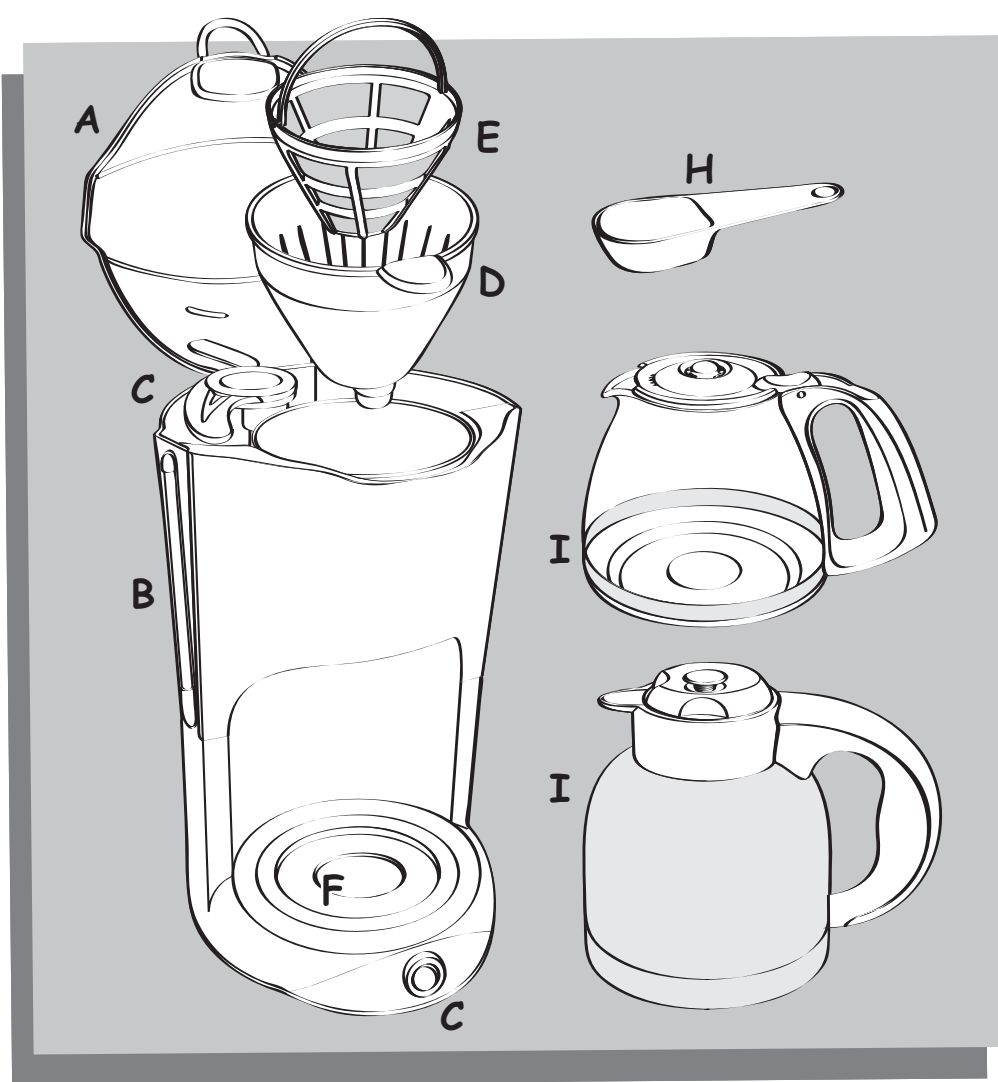


Moulinex
thermo coffee

FR
EN
ES
IT
RU
UA



www.moulinex.com



DESCRIPTION

a	Lid	f	Warming plate
b	Tank	g	On / off button
c	Blade of watering	h	Measuring spoon
d	Filter holder	i	Jug or insulated pot (according to model)
e	Permanent filter (according to model)		

SAFETY RECOMMENDATIONS

- Read the instructions for use carefully before using your appliance for the first time: the manufacturer does not accept responsibility for use that does not comply with the instructions.
- This appliance is not intended for use by persons (including children) with reduced physical, sensory or mental capacities, or lack of experience and knowledge, unless they have been given supervision or instruction concerning use of the appliance by a person responsible for their safety. Children should be supervised to ensure that they do not play with the appliance.
- Before plugging the appliance in, make sure that the power it uses corresponds to your electrical supply system and that the outlet is earthed.
- Do not use the appliance if the power cord or plug is damaged. The power cord must be replaced by an authorised centre to prevent any danger.
- Do not immerse the appliance, power cord or plug in water or any other liquid.
- Do not leave the power cord within reach of children.
- The power cord must never be close to or in contact with the hot parts of your appliance, near a source of heat or over a sharp edge.
- For your safety, only use the manufacturer's accessories and spare parts designed for your appliance.
- Do not pull on the cord to unplug the appliance.
- Do not use the jug or the insulated pot over a flame or on the hob of a cooker.
- Do not pour water into the appliance if it is still hot.

Any error in the electrical connection will negate your guarantee.

- Your appliance is designed for domestic use only. Any commercial use, inappropriate use or failure to comply with the instructions, the manufacturer accepts no responsibility and the guarantee will not apply.
- Unplug the appliance when you have finished using it and when you clean it.
- Do not use the appliance if it is not working properly or if it has been damaged. If this occurs, contact an authorised service centre.
- All interventions other than cleaning and everyday maintenance by the customer must be performed by an authorised service centre.
- Always close the lid (a) when running the coffee maker.
- All appliances are subject to strict quality control procedures. These include actual usage tests on randomly selected appliances, which would explain any traces of use.
- Never place your jug or your insulated pot in a microwave oven, in a dishwasher or on a cooking hob.
- Never put your hand inside the insulated pot.
- Do not use the jug or the insulated pot without their lid.

BEFORE USING FOR THE FIRST TIME

- Run the coffee maker for the first time without coffee, rinsing the circuit with 1 litre of water.

MAKING COFFEE

- (Follow illustrations 1 to 7)
- Use cold water only and a No. 4 paper filter. Do not use the insulated pot without its top.
 - Do not exceed the maximum amount of water indicated on the water tank level indicator.

- This coffee maker is equipped with a drip-stop feature so that you can serve a cup of coffee before all the water has finished flowing through. Return the jug or the insulated pot to its base quickly to avoid spillage.
- For better heat preservation, rinse the insulated pot with hot water before use.
- The lid of the insulated pot must be locked in place toward the right to the stop to prepare coffee and to keep it hot.
- Wait a few minutes before preparing another pot of coffee.

CLEANING

- To dispose of the used coffee grounds, remove the filter holder (d) from the coffee maker.
- Unplug the appliance.
- Do not clean the appliance while hot.
- Clean with a damp cloth or sponge.
- Never put the appliance in water or under running water.
- The filter holder can be washed in the dish washer.

DESCALING

- Descale your coffee maker after every 40 cycles.
- You can use:
- a packet of limescale remover diluted in 2 large cups of water.
 - or 2 cups of white vinegar.
 - Pour into the tank (b) and switch the coffee maker on (without coffee).
 - Let the equivalent of one cup flow into the

- jug or the insulated pot (i), then switch off.
- Leave to act for one hour.
- Switch the coffee maker back on to run the rest of the liquid through.
- Rinse the coffee maker by running 1 litre of water through it 2 or 3 times.

The guarantee does not cover coffee makers that do not work properly or do not work at all because they have not been descaled.

ACCESSORIES

Insulated pot
Glass jug

TROUBLESHOOTING

- Check:
 - that it is plugged in properly.
 - that the switch or the On / off button (red indicator light on) is in the "ON" position.
 - that the filter holder is in place, the blade of watering (c) placed above it.
- The water flow-through time is too long or makes too much noise:
 - descale your coffee maker.

If your appliance still doesn't work please contact an authorised service centre.



Environment protection first!

- ① Your appliance contains valuable materials which can be recovered or recycled.
- ➡ Leave it at a civic waste collection point.

HELPLINE:

If you have any product problems or queries, please contact our Customer Relations Team first for expert help and advice:

0845 602 1454 – UK
(01) 475 1947 – Ireland